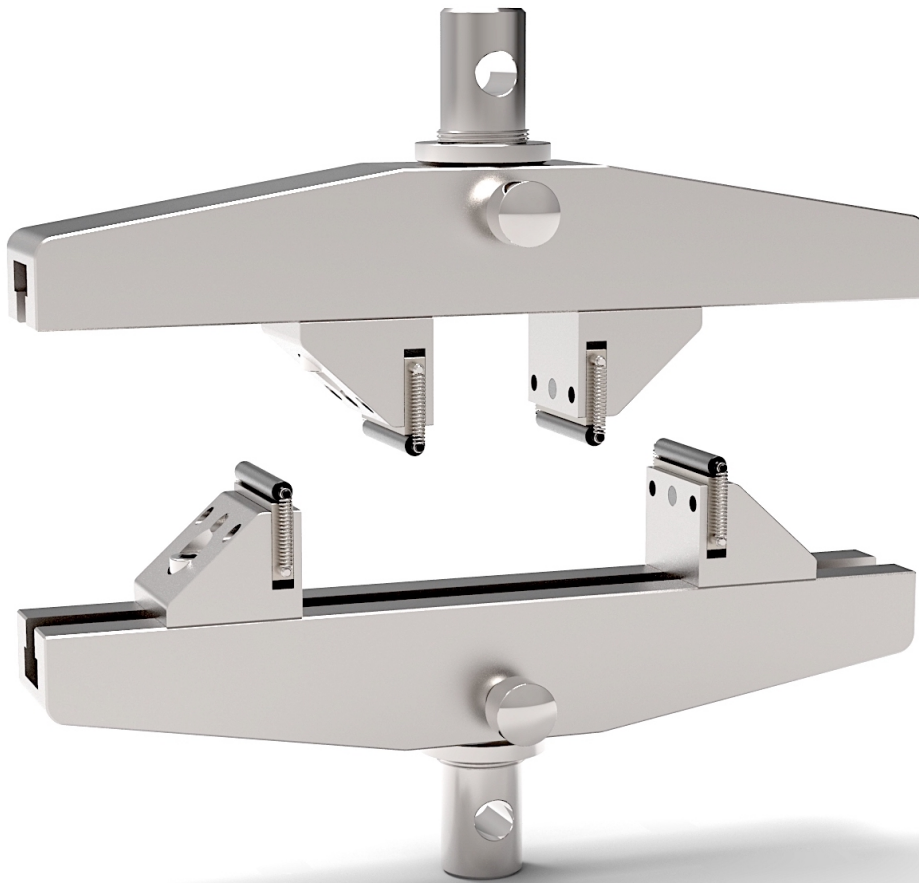




THELKIN
Know the Difference

Accessory FI.BE.4P

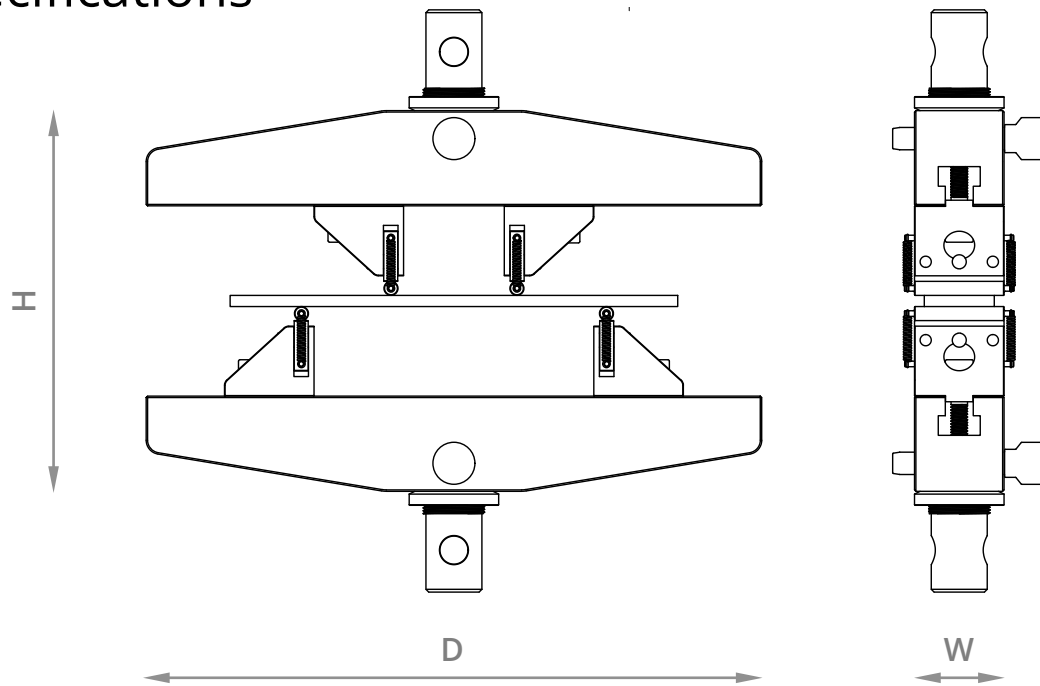
4-POINT BENDING FIXTURE



Description

Four-point bending fixtures for static and dynamic material testing. The set includes two bars, four supports and four hardened steel anvils, along with the required mounting hardware. The anvils are available in different radii. Various adapter options are further available to mount the fixture onto the testing system.

Specifications



Load Range		5 kN	10 kN	25 kN
Material		Aluminum	Steel	Steel
Specimen Thickness		not limited		
Support Span		5 ... 150 mm		
Dimensions	H	132 mm	132 mm	144 mm
	D	220 mm	220 mm	220 mm
	W	32 mm	32 mm	40 mm
Weight ¹		1.8 kg	2.5 kg	4.7 kg

¹ Weight of one bar with two support blocks.

